

# **BITTERROOT RESOURCES LTD.**

**Suite 101, 1590 Bellevue Avenue, West Vancouver, BC, V7V 1A7  
tel 604 922 1351, fax 604 922 8049  
www.bitterrootresources.com**

November 17, 2009

## **BITTERROOT INTERSECTS 4.2 METRES GRADING 75.4 GRAMS GOLD/TONNE (13.8 feet grading 2.2 oz gold/ton), DISCOVERS “HW-1” HIGH-GRADE VEIN**

Michael Carr, President of Bitterroot Resources Ltd. (BTT, TSX-V) reports that a 4.2 metre-wide vein/breccia interval grading 75.4 grams gold/Tonne (13.8 feet grading 2.2 oz gold/ton) in hole BTT-E57 is a highlight of additional high-grade drill results from the 100 percent-owned Mineral Creek gold project near Port Alberni, BC. Close-spaced definition drilling of the Ember vein has returned high-grade gold intersections (table 1) and discovered at least one new high-grade gold/silver mineralized vein called the HW-1 vein (table 2).

Drilling of the HW-1 vein returned a 0.3 metre-thick interval grading 137.5 grams gold/Tonne (1.0 feet grading 4.0 oz gold/ton) in hole BTT-E53. A second interval possibly from the HW-1 vein also returned high-grade silver mineralization (1,170 grams silver/Tonne over 0.13 metres, or 0.43 feet grading 34.1 oz silver/ton) in hole BTT-E35. The HW-1 vein is the sixth high-grade gold-bearing vein identified to date on the Mineral Creek property, in addition to the Linda, Ember, 900, 1050 and Mineral Creek zones.

Drilling completed in 2009 has defined the Ember vein over a strike length of 150 metres and an elevation range of at least 90 metres. The more silver-rich HW-1 vein has been drilled over a strike length of 50 metres and an elevation range of 45 metres. These en-echelon veins demonstrate good continuity and pronounced nugget effect, which is typical of high-grade gold deposits. On the Mineral Creek property, high gold grades are often accompanied by visible gold grains. The Ember and HW-1 veins are both open along strike and down dip. The Linda, Ember and HW-1 veins appear to be associated with gold mineralization and historical small-scale underground workings in the Mineral Creek fault zone, which suggests there is good potential for the discovery of additional high-grade gold/silver-bearing structures on this part of the Mineral Creek property. Drill crews are currently in the process of completing the final hole (BTT-E68) of the 2009 exploration season and are expected to demobilize within a week.

### **Bulk Sampling**

As a condition of the original property purchase agreement with the vendor, Mineral Creek Ventures Inc. is extracting a 5,000 tonne bulk sample, with the costs and proceeds split 50/50 with Bitterroot. Mining activities on the Linda vein are currently winding up for the winter. A 100-tonne stockpile of mineralized vein material is currently being crushed. This material will be milled and tabled to produce gold concentrates and sulphide-rich concentrates. A second table has been purchased to allow more efficient recovery of gold from sulphide concentrates. A dore bar containing 36 troy ounces of

gold and 8.3 troy ounces of silver was poured on November 3, 2009. Milling of crushed mineralized vein material and tabling of concentrates is expected to continue until mid-December.

**Table 1**  
**EMBER VEIN**

<b>DDH #</b>	<b>From (metres)</b>	<b>To (metres)</b>	<b>Interval (metres)</b>	<b>Estimated True Width (metres)</b>	<b>Au grams/Tonne</b>	<b>Ag grams/Tonne</b>
<b>BTT-E35</b>	<b>70.5</b>	<b>71.4</b>	<b>0.9</b>	<b>0.9</b>	<b>8.9</b>	<b>3.3</b>
<b>BTT-E38</b>	<b>82.05</b>	<b>82.5</b>	<b>0.45</b>	<b>0.25</b>	<b>11.7</b>	<b>1.2</b>
<b>BTT-E39</b>	<b>96.1</b>	<b>96.75</b>	<b>0.65</b>	<b>0.45</b>	<b>101.0</b>	<b>29.3</b>
<b>BTT-E42</b>	<b>92.85</b>	<b>94.1</b>	<b>1.25</b>	<b>0.9</b>	<b>8.2</b>	<b>1.9</b>
<b>BTT-E43</b>	<b>42.7</b>	<b>44.15</b>	<b>1.45</b>	<b>1.1</b>	<b>3.1</b>	<b>4.1</b>
<b>BTT-E44</b>	<b>42.7</b>	<b>45.05</b>	<b>2.35</b>	<b>2</b>	<b>7.7</b>	<b>2.4</b>
Including;						
BTT-E44	42.7	43.75	1.05		6.1	2.3
BTT-E44	43.75	44.25	0.5		9.5	3.5
BTT-E44	44.25	44.75	0.5		0.7	0.6
BTT-E44	44.75	45.05	0.3		18.2	4.1
<b>BTT-E45</b>	<b>43.65</b>	<b>44.35</b>	<b>0.7</b>	<b>0.6</b>	<b>6.4</b>	<b>3.5</b>
<b>BTT-E45</b>	<b>46.55</b>	<b>46.7</b>	<b>0.15</b>	<b>0.1</b>	<b>15.8</b>	<b>7.2</b>
<b>BTT-E47</b>	<b>90.45</b>	<b>91</b>	<b>0.55</b>	<b>0.4</b>	<b>11.1</b>	<b>1.0</b>
<b>BTT-E49</b>	<b>68.8</b>	<b>69.5</b>	<b>0.7</b>	<b>0.65</b>	<b>8.8</b>	<b>2.0</b>
<b>BTT-E50</b>	<b>73.35</b>	<b>73.9</b>	<b>0.55</b>	<b>unknown</b>	<b>27.3</b>	<b>22.9</b>
<b>BTT-E52</b>	<b>99</b>	<b>99.7</b>	<b>0.7</b>	<b>0.4</b>	<b>7.5</b>	<b>1.0</b>
<b>BTT-E53</b>	<b>78.95</b>	<b>83.55</b>	<b>4.6</b>	<b>3.5</b>	<b>6.3</b>	<b>2.2</b>
Including;						
BTT-E53	78.95	79.8	0.85		2.3	0.9
BTT-E53	79.8	80.65	0.85		1.9	0.9

**Table 1**  
**EMBER VEIN cont'd**

<b>DDH #</b>	<b>From (metres)</b>	<b>To (metres)</b>	<b>Interval (metres)</b>	<b>Estimated True Width (metres)</b>	<b>Au grams/Tonne</b>	<b>Ag grams/Tonne</b>
BTT-E53	80.65	81.4	0.75		0.1	0.4
BTT-E53	81.4	82.45	1.05		0.0	3.2
BTT-E53	82.45	82.85	0.4		4.8	1.4
BTT-E53	82.85	83.55	0.7		33.2	6.3

<b>BTT-E54</b>	<b>79.7</b>	<b>80.3</b>	<b>0.6</b>	<b>0.6</b>	<b>4.2</b>	<b>1.4</b>
----------------	-------------	-------------	------------	------------	------------	------------

<b>BTT-E55</b>	<b>91.55</b>	<b>91.8</b>	<b>0.25</b>	<b>0.25</b>	<b>12.6</b>	<b>7.6</b>
----------------	--------------	-------------	-------------	-------------	-------------	------------

<b>BTT-E56</b>	<b>94.4</b>	<b>95.3</b>	<b>0.9</b>	<b>0.55</b>	<b>14.7</b>	<b>1.9</b>
----------------	-------------	-------------	------------	-------------	-------------	------------

<b>BTT-E57</b>	<b>75.05</b>	<b>79.45</b>	<b>4.4</b>	<b>4.2</b>	<b>75.4</b>	<b>9.6</b>
----------------	--------------	--------------	------------	------------	-------------	------------

Including:

BTT-E57	75.05	75.65	0.6		233.0	45.1
BTT-E57	75.65	76.8	1.15		0.7	1.1
BTT-E57	76.8	78	1.2		3.0	0.2
BTT-E57	78	78.75	0.75		0.1	0.3
BTT-E57	78.75	79.15	0.4		467.0	33.4
BTT-E57	79.15	79.45	0.3		1.3	0.4

**Table 2**  
**HW-1 VEIN**

<b>DDH #</b>	<b>From (metres)</b>	<b>To (metres)</b>	<b>Interval (metres)</b>	<b>Estimated True Width (metres)</b>	<b>Au grams/Tonne</b>	<b>Ag grams/Tonne</b>
<b>BTT-E35</b>	<b>47.7</b>	<b>47.85</b>	<b>0.15</b>	<b>0.13</b>	<b>7.3</b>	<b>1170</b>
						<b>Checked 1135</b>

<b>BTT-E39</b>	<b>36</b>	<b>38.7</b>	<b>2.7</b>	<b>2.35</b>	<b>1.7</b>	<b>2.3</b>
----------------	-----------	-------------	------------	-------------	------------	------------

<b>BTT-E45</b>	<b>31</b>	<b>36</b>	<b>5</b>	<b>2.5</b>	<b>1.4</b>	<b>4.5</b>
----------------	-----------	-----------	----------	------------	------------	------------

<b>BTT-E49</b>	<b>28.65</b>	<b>30.45</b>	<b>1.8</b>	<b>1.8</b>	<b>3.3</b>	<b>3.7</b>
----------------	--------------	--------------	------------	------------	------------	------------

**Table 2**  
**HW-1 VEIN con'td**

DDH #	From (metres)	To (metres)	Interval (metres)	Estimated True Width (metres)	Au grams/Tonne	Ag grams/Tonne
BTT-E51	29.9	30.1	0.2	0.2	14.4	9.8
BTT-E53	28.8	29.35	0.55	0.3	137.5	29.8
BTT-E57	27.6	28.4	0.8	0.7	3	1.3
BTT-E58	28.15	28.8	0.65	0.6	2.6	3.4
BTT-E59	29.5	30.5	1	0.8	4.8	1.9

Mr. Michael Becherer, P. Geo is the Qualified Person responsible for the design and implementation of exploration programs on the Mineral Creek project. The drill core was logged and sampled by G.A. Price, P. Geo. Samples were assayed by ALS Chemex in North Vancouver, BC. Analysis consisted of procedures Au-AA 23 and ME-ICP41. If Au content was greater than 10 ppm, samples were re-assayed by procedure Au-GRA21. All drill hole intervals reported in this news release achieved 100 percent core recovery.

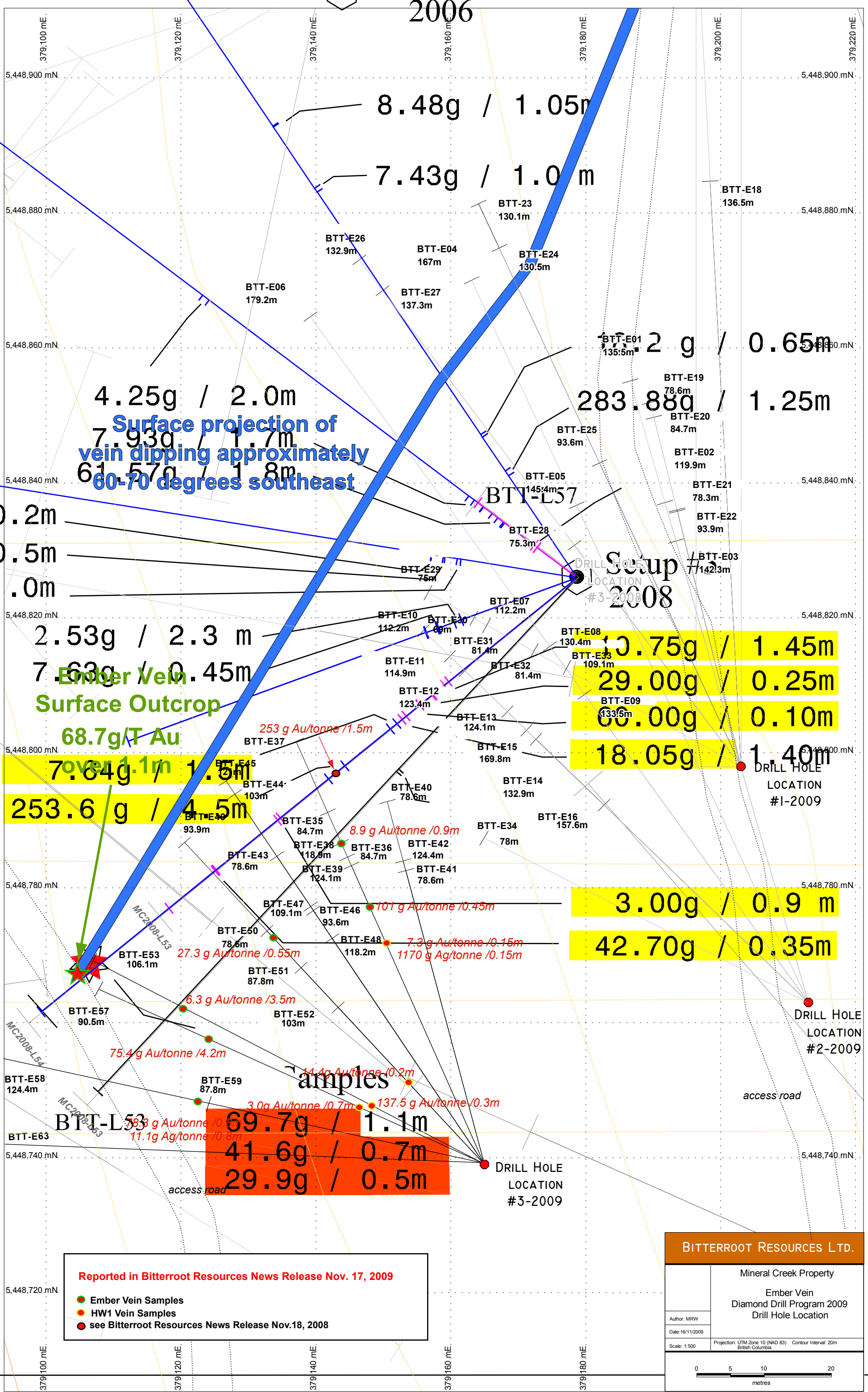
ON BEHALF OF THE BOARD OF DIRECTORS

*Michael S. Carr*  
Director

The TSX Venture Exchange has not reviewed and does not accept responsibility for the adequacy or accuracy of the contents of this news release.

**FORWARD LOOKING STATEMENTS:** This document contains statements about expected or anticipated future events and/or financial results that are forward-looking in nature and as a result, are subject to certain risks and uncertainties, such as general economic, market and business conditions, regulatory processes and actions, technical issues, new legislation, competitive conditions, the uncertainties resulting from potential delays or changes in plans, the occurrence of unexpected events and the company's ability to execute and implement its future plans. Actual results may differ materially from those projected by management. For such statements, we claim the safe harbour for forward-looking statements within the meaning of the Private Securities Legislation Reform Act of 1995.

2006



Surface projection of vein dipping approximately 60-70 degrees southeast

Ember Vein Surface Outcrop  
68.7g/T Au

7.64g / 1.5m  
253.6 g / 4.5m

10.75g / 1.45m  
29.00g / 0.25m  
65.00g / 0.10m  
18.05g / 1.40m

3.00g / 0.9 m  
42.70g / 0.35m

69.7g / 1.1m  
41.6g / 0.7m  
29.9g / 0.5m

Reported in Bitterroot Resources News Release Nov. 17, 2009

- Ember Vein Samples
- HW1 Vein Samples
- see Bitterroot Resources News Release Nov.18, 2008

**BITTERROOT RESOURCES LTD.**

Mineral Creek Property  
Ember Vein  
Diamond Drill Program 2009  
Drill Hole Location

Author: MRW  
Date: 10/11/2009  
Scale: 1:500  
Projection: UTM Zone 10 (NAD 83) Contour Interval: 20m  
British Columbia