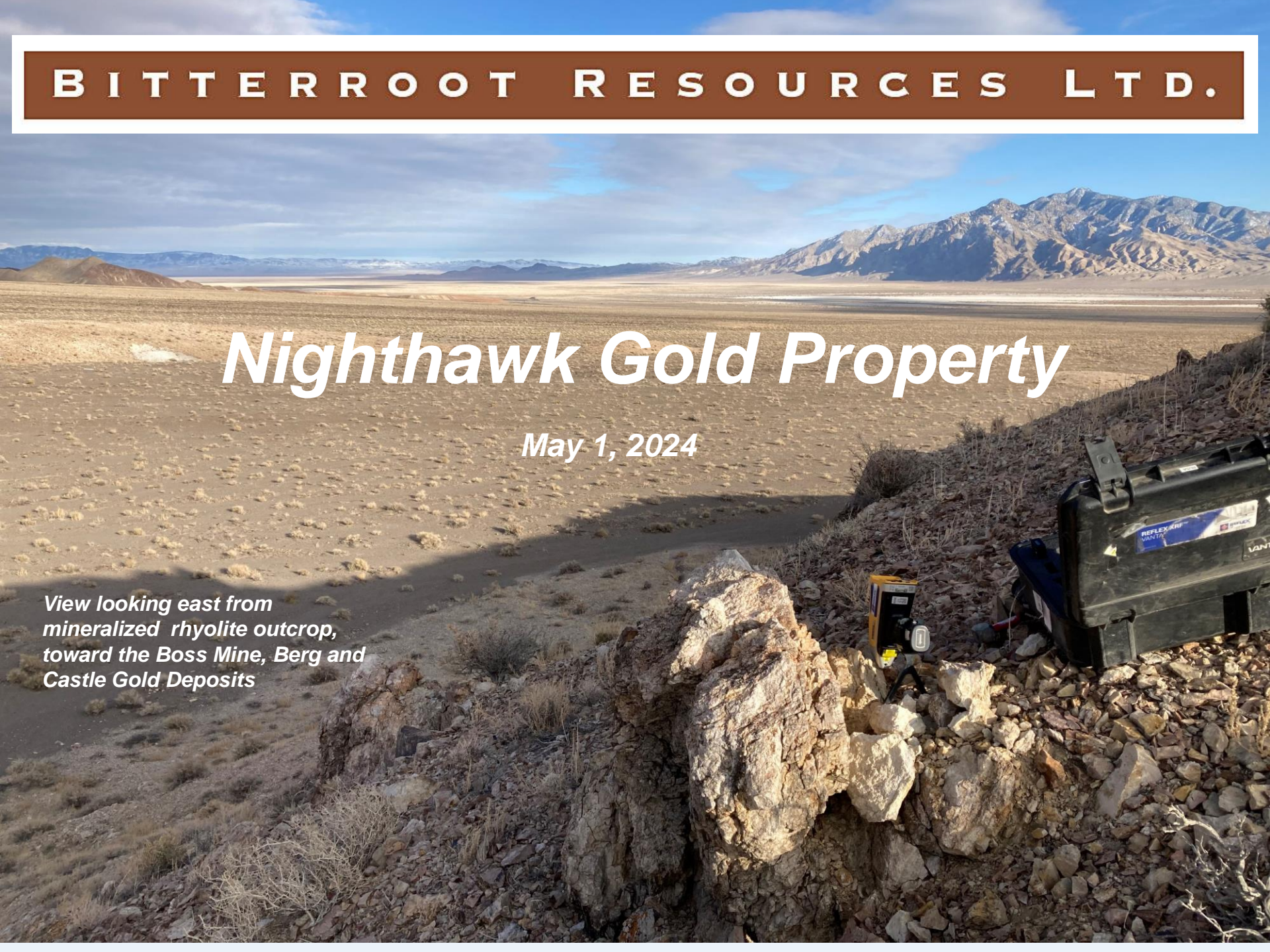


BITTERROOT RESOURCES LTD.

Nighthawk Gold Property

May 1, 2024

*View looking east from
mineralized rhyolite outcrop,
toward the Boss Mine, Berg and
Castle Gold Deposits*



Forward-Looking Statements



Certain statements contained in this slide presentation may constitute forward-looking statements under securities legislation. Generally, forward-looking information can be identified by the use of forward-looking terminology such as “expects” or “it is expected”, or variations of such words and phrases or statements that certain actions, events or results “will” occur. This document contains statements about expected or anticipated future events and/or financial or exploration results that are forward-looking in nature and as a result, are subject to certain risks and uncertainties, such as general economic, market and business conditions, regulatory processes and actions, technical issues, new legislation, competitive conditions, the uncertainties resulting from potential delays or changes in plans, the occurrence of unexpected events and the company’s ability to execute and implement its future plans. Actual events may differ materially from those projected in the forward-looking statements. When relying on forward-looking statements to make decisions, investors and others should carefully consider the foregoing factors and other uncertainties and should not place undue reliance on such forward-looking statements. The Company does not undertake to update any forward-looking statements, except as may be required by applicable securities laws. For such forward-looking statements, we claim the safe harbour for forward-looking statements within the meaning of the Private Securities Legislation Reform Act of 1995.

Mr. Rick Streiff, CPG, is the Qualified Person responsible for the technical content of this slide presentation

The Gold Market Wakes Up...

“We are in the early stages of a very long bull market for Golds. From large to small caps.....”

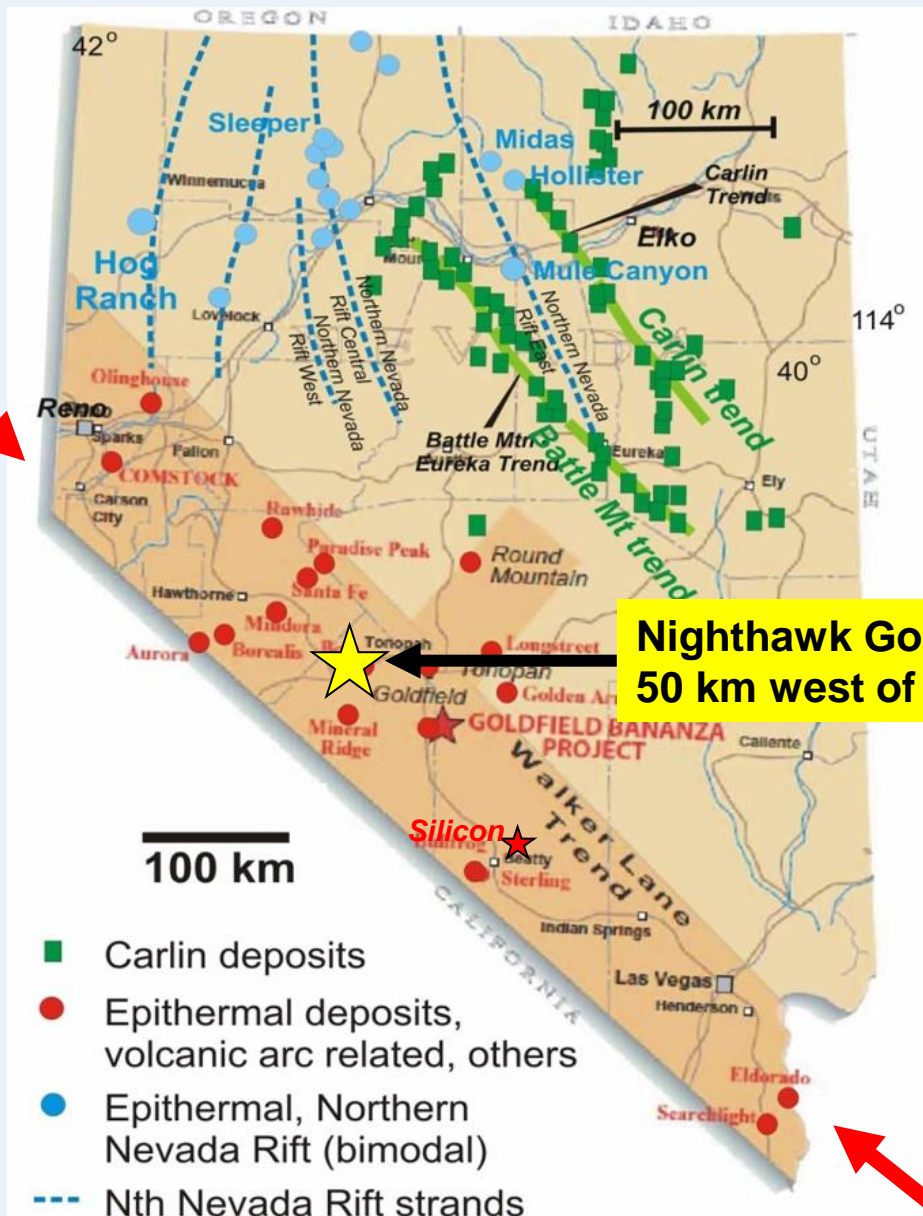
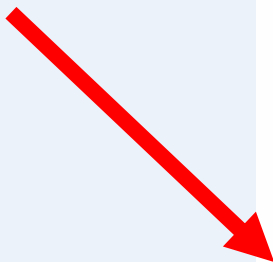
BOB HOYE, INSTITUTIONAL ADVISORS,
April 25, 2024



2024 - Gold breaks out to new highs,
GDx lags, despite strong fundamentals
= Gold equities are undervalued

Nevada – The Leading US Mining State

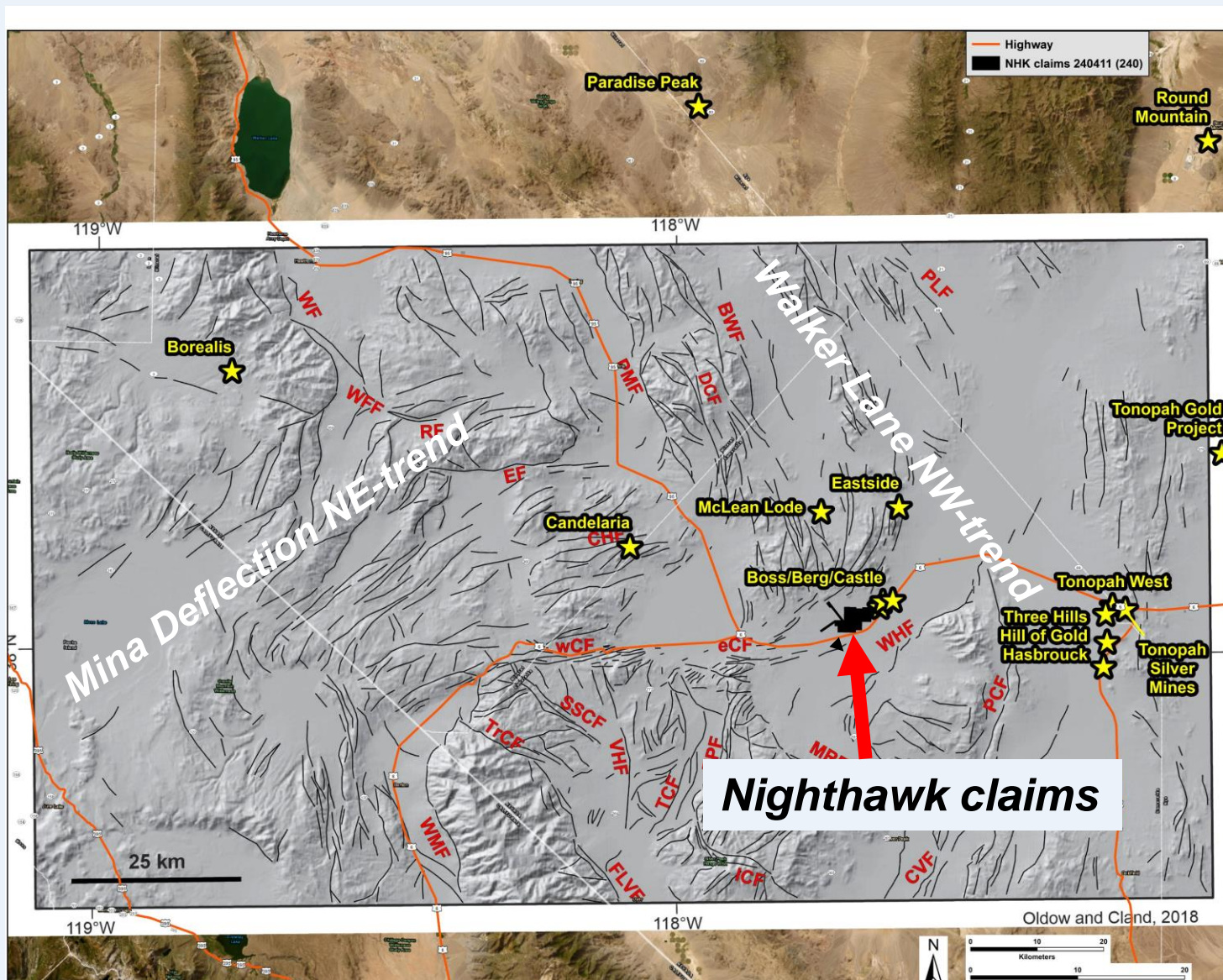
Walker Lane
Gold District



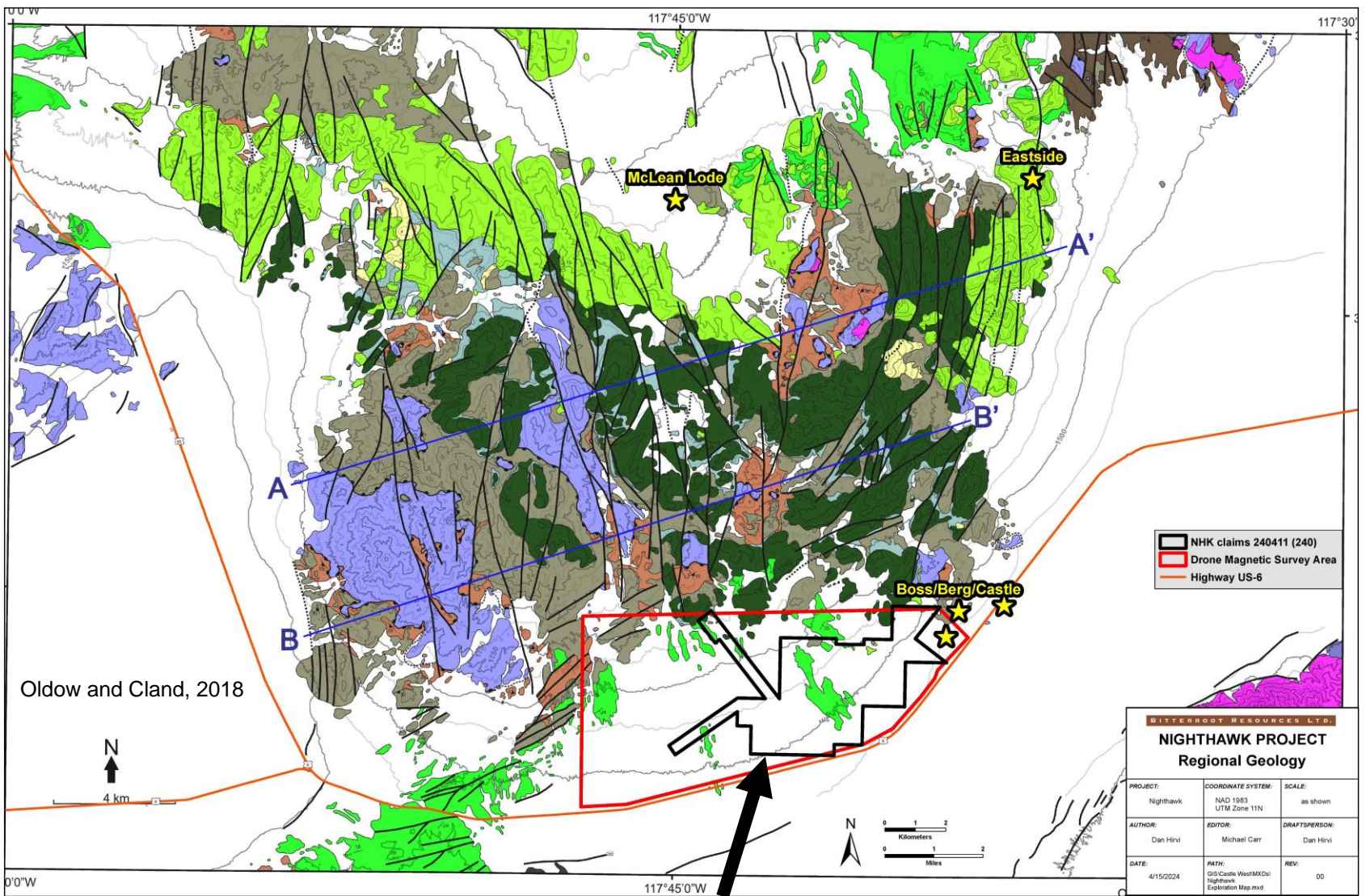
Nighthawk Gold Project
50 km west of Tonopah



Regional Structures and Gold Deposits



Regional Geology and Deposits

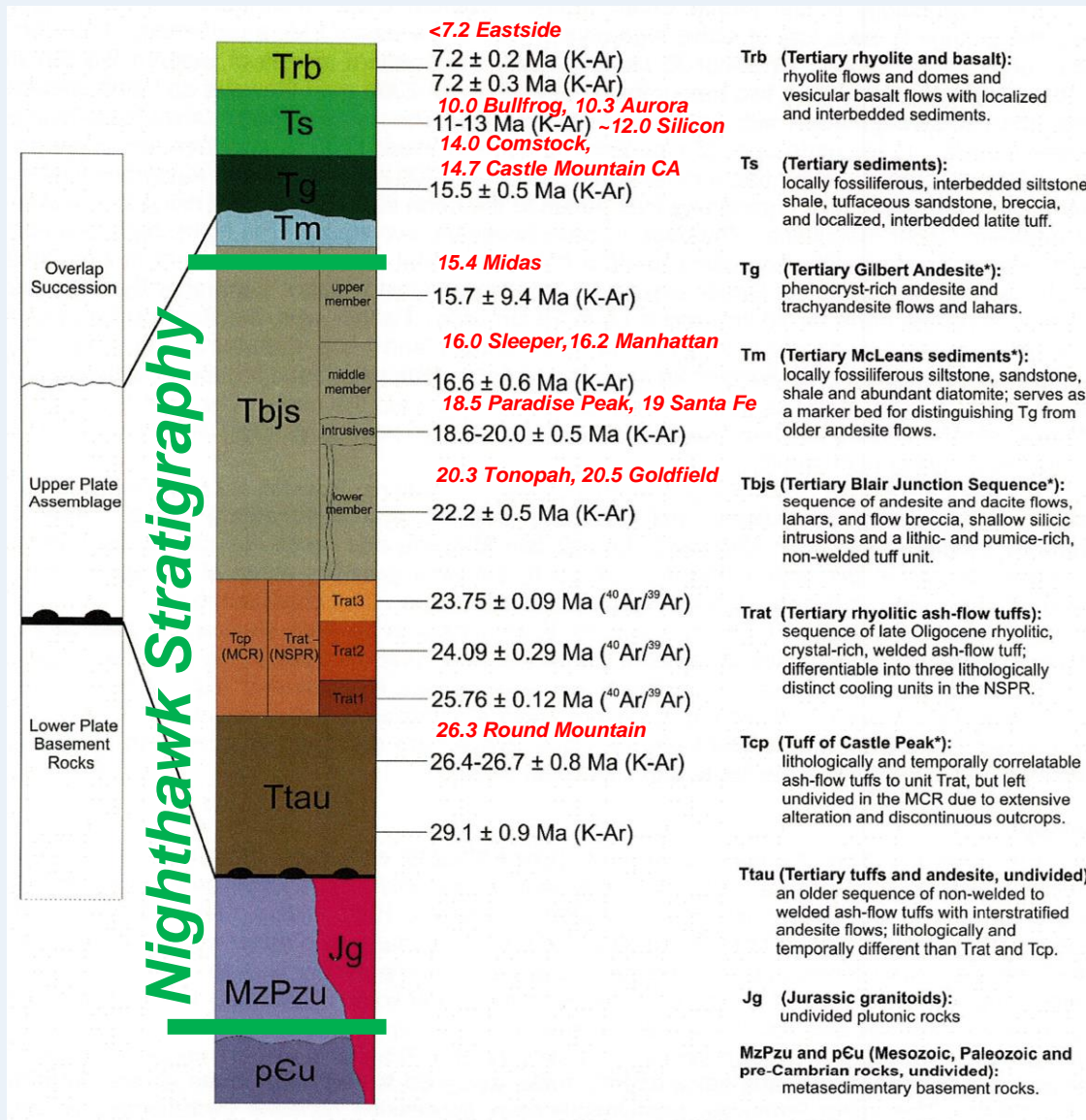


- NHK claims 240411 (240)
- Drone Magnetic Survey Area
- Highway US-6

BITTERROOT RESOURCES LTD.		
NIGHTHAWK PROJECT		
Regional Geology		
PROJECT:	COORDINATE SYSTEM:	SCALE:
Nighthawk	NAD 1983 UTM Zone 11N	as shown
AUTHOR:	EDITOR:	DRAFTER/PERSON:
Dan Hirvi	Michael Carr	Dan Hirvi
DATE:	PATH:	REV:
4/15/2024	GIS Castle West/MKDs Nighthawk Exploration Map.mxd	00

Nighthawk claims

Regional Stratigraphy and Deposits



Stratigraphy:
 Oldow and Cland,
 2018

Deposit Ages:
 John and Henry,
 2020

“Pediment”

“A plain of eroded bedrock (often covered by a thin veneer of alluvium) in an arid region, developed between mountain and basin areas”



There is outcrop and gold mineralization out there !

Nighthawk Property - Attributes (1)

- Bitterroot's detailed aeromagnetic survey identified ~15 km of previously unknown and untested structures on pediment,
- Prospecting has located gold-mineralized angular float throughout the survey area,
- Potential for multi-million ounce, **structurally controlled** oxide and sulfide gold/silver deposits in the Walker Lane gold district (Silicon/Merlin, Round Mountain, Tonopah),

Nighthawk Property - Attributes (2)

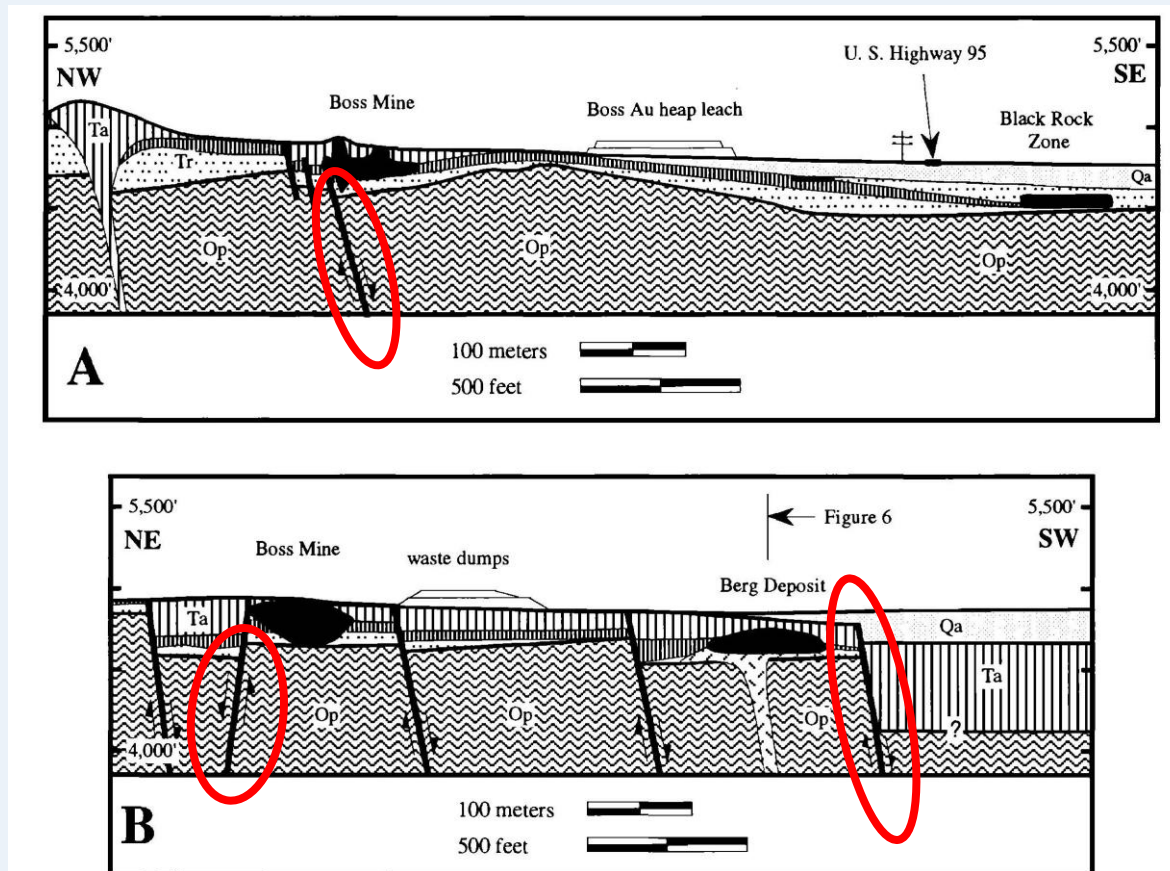
- 240 claims, 100%-owned, no royalties, easy access, shallow targets, BLM land,
- Previous explorers did not have detailed magnetic data, so stayed close to the range front,
- Boss/Berg/Castle discoveries were made using vertical RC or air-blast drilling, which focused on finding laterally extensive low-grade oxide gold,
- No known previous drilling of angle holes testing for higher grade in vertical structures.

Boss Mine

Au/Ag-mineralization is controlled by a NE-trending, vertical structural zone



Boss/Castle/Berg Deposits ***controls on mineralization –*** ***vertical feeder structures, Rhyolite domes****



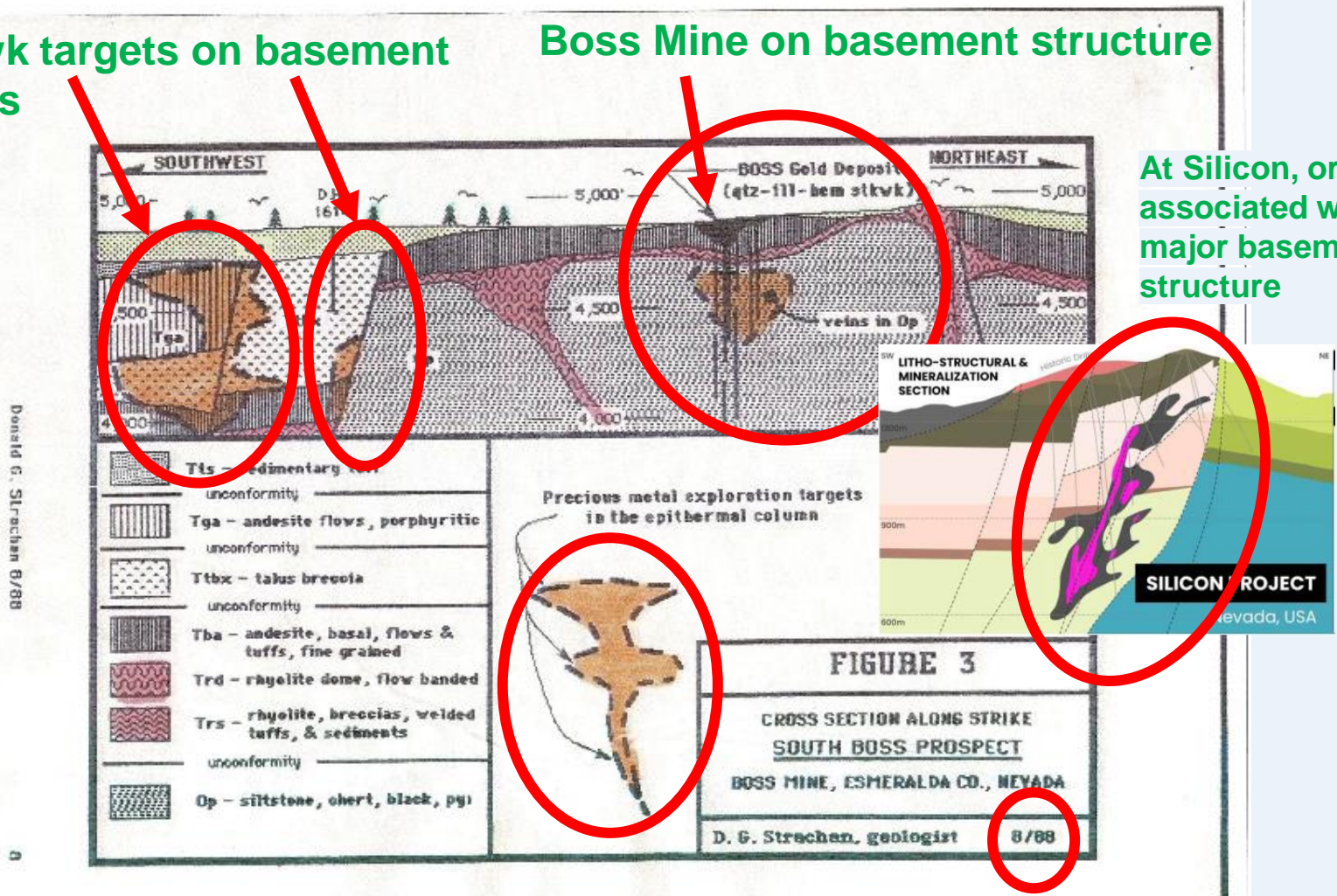
**Source: Diner and Strachan, 1994, Geology of the Boss Mining Area, Gilbert District, Esmeralda County, Nevada: Economic Geology, Vol 89, pp 1176-1182.*

In the Walker Lane, Everything Old is New Again

Nighthawk targets on basement structures

Boss Mine on basement structure

At Silicon, ore is associated with a major basement structure



Don Strachan, CPG, 1988

Nighthawk - Mineralized Float



1.3 g Au/t, 284 g Ag/t



6.5 g Au/t, 6.0 g Ag/t



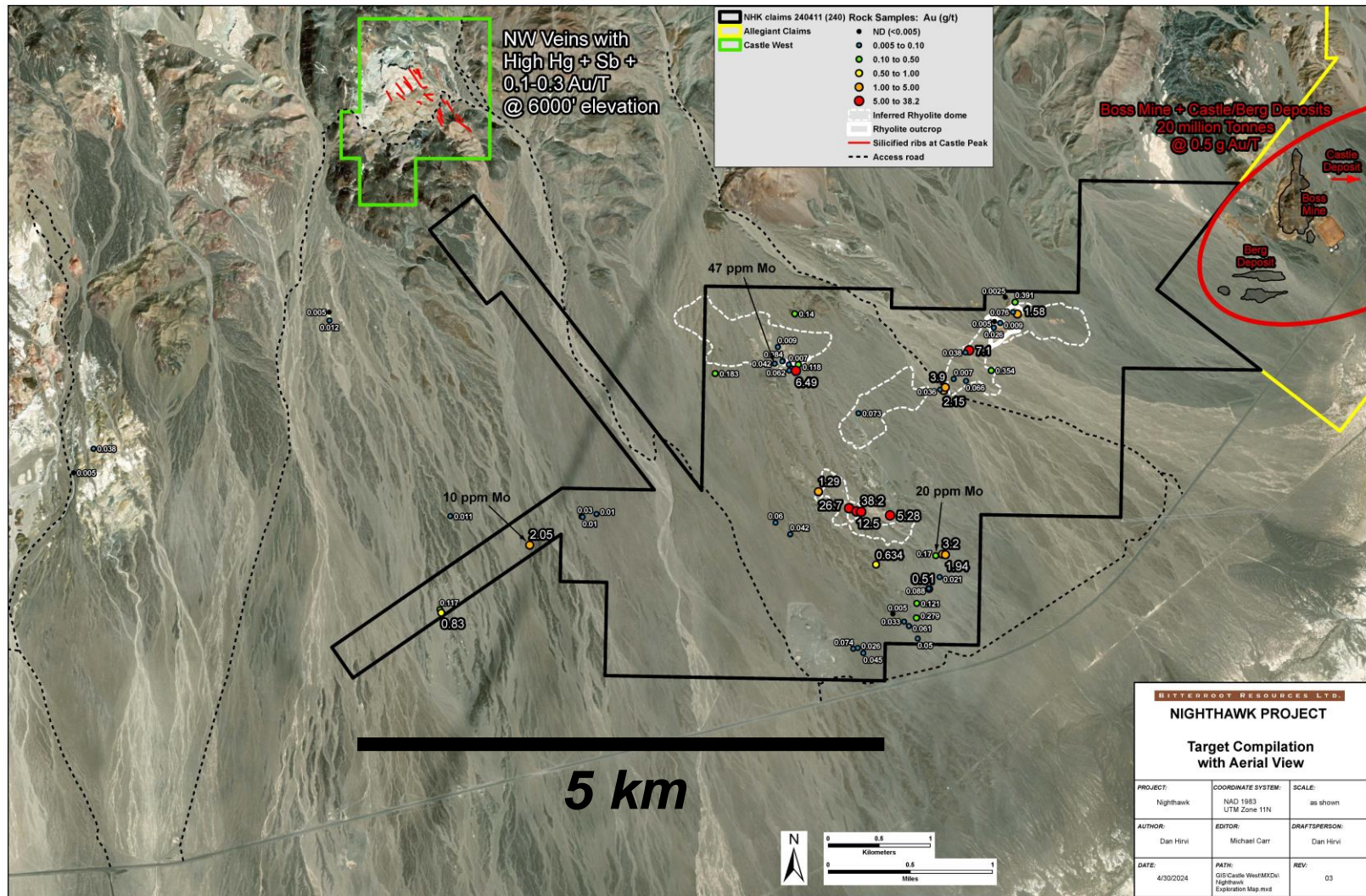
10.9 g Au/t, 2.5 g Ag/t



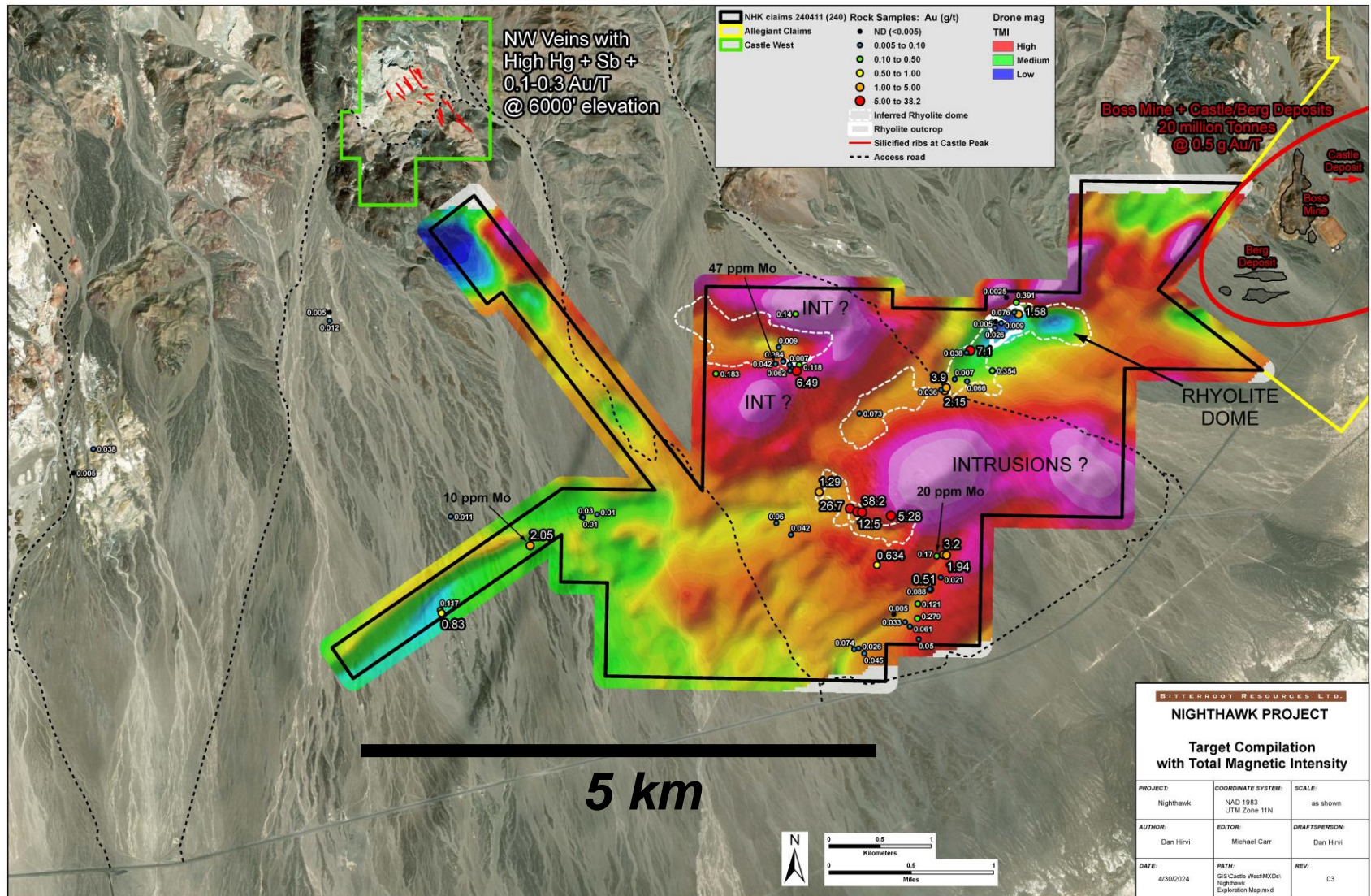
7.1 g Au/t, 11 g Ag/t

Nighthawk – Sampling Results

mineralized angular float

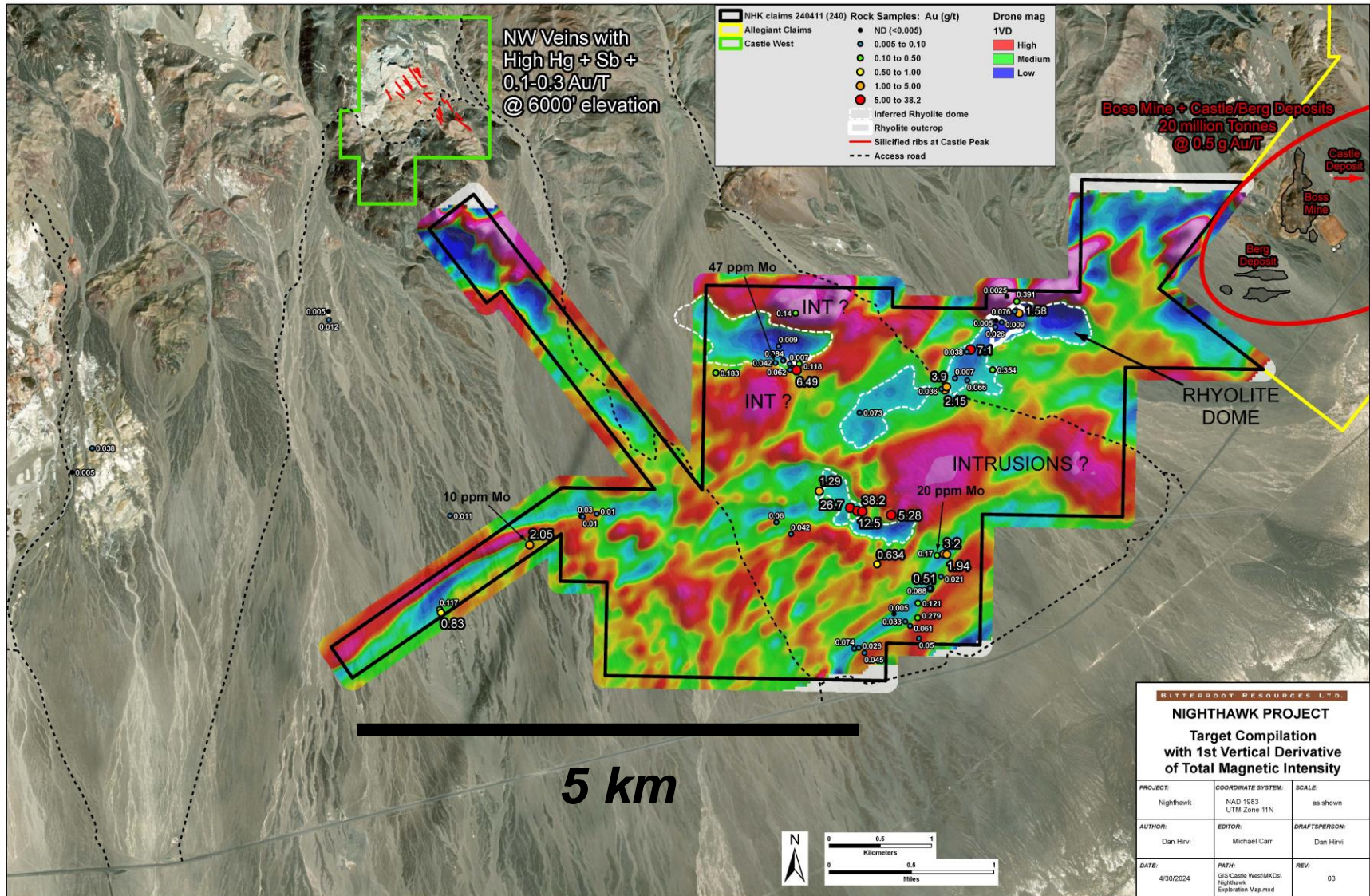


Nighthawk – Aeromagnetics (TMI-RTP)



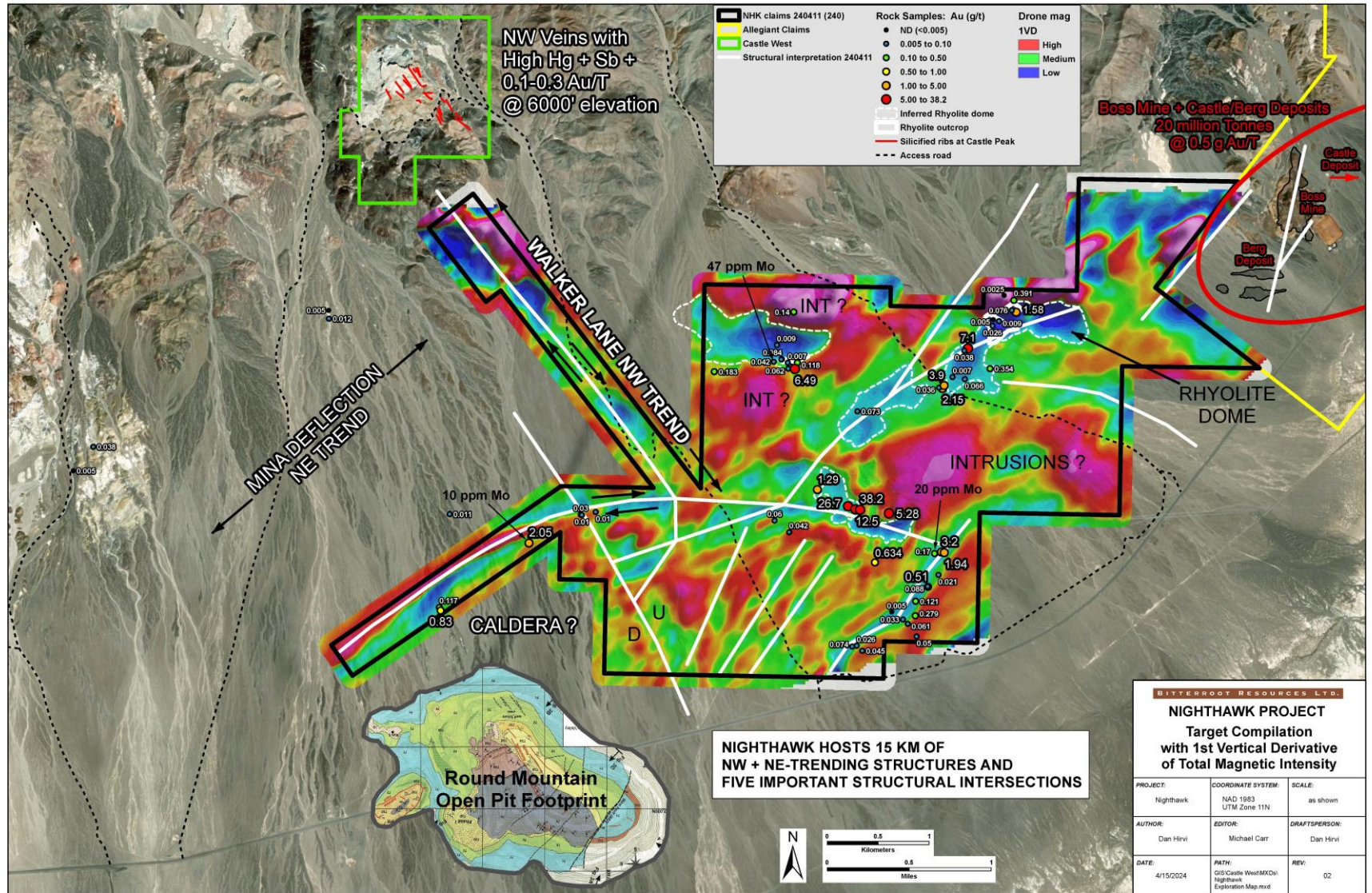
BITTERROOT RESOURCES LTD.		
NIGHTHAWK PROJECT		
Target Compilation with Total Magnetic Intensity		
PROJECT:	COORDINATE SYSTEM:	SCALE:
Nighthawk	NAD 1983 UTM Zone 11N	as shown
AUTHOR:	EDITOR:	DRAFTSPERSON:
Dan Hirvi	Michael Carr	Dan Hirvi
DATE:	MAP:	REV:
4/30/2024	GIS-Castle West/MXDoc Nighthawk Exploration Map.mxd	03

Nighthawk – Aeromagnetics (1VD)

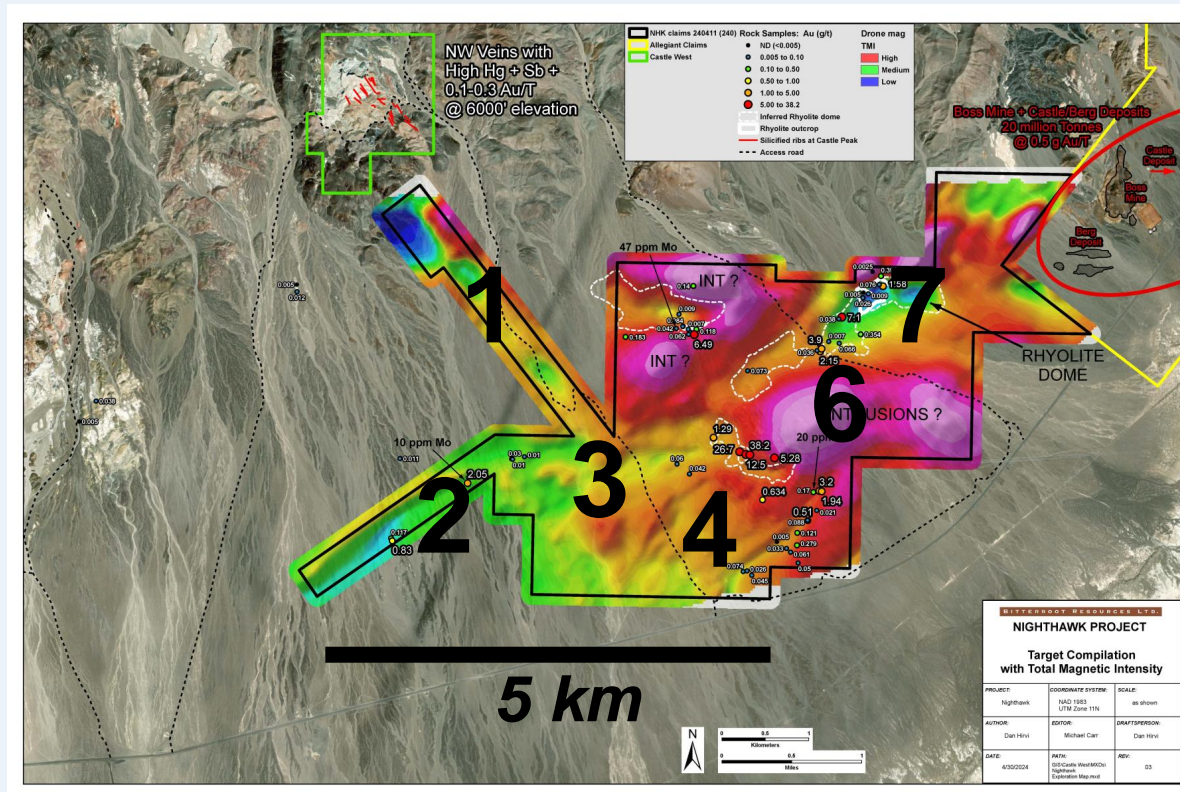


Nighthawk – Aeromagnetics (1VD)

Structural Interpretation



Nighthawk – Drill Targets



1. 4 km-long Walker Lane (NW) structure,
2. 6 km-long curved Mina Deflection (E-NE) structures,
3. Intersection of 1) and 2)
4. Associated smaller structures throughout claim block
5. Is this part of a large collapsed caldera ?
6. Roof zones of interpreted intrusions
7. Flanks of rhyolite domes

Nighthawk Property - Progress

- Aeromagnetic survey has defined **15 km** of prospective multi-km **linear structures** and **structural intersections** on pediment, along strike from structurally controlled Boss/Berg/Castle gold deposits
- Prospecting finds Au/Ag mineralized float down-slope from structures interpreted from aeromagnetic survey
- Recently staked 174 new claims for a total of 240 claims, no underlying royalties, BLM Permitting

Nighthawk Property – Next Steps

- Reverse Circulation scout drilling of structural targets (~ 20 100-150 metre angle holes)

- Follow up with core drilling of mineralized structures

Bitterroot Resources Ltd.

TSX-V symbol – BTT

Common Shares Outstanding: 93,684,000

Fully diluted: 103,984,000

***PO Box 91878
West Vancouver, British Columbia
Canada, V7V 4S4***

Tel: 604 922 1351

Contact – Michael Carr, CEO

Email: infoman@bitterrootresources.com

Website: www.bitterrootresources.com